



# Carry the Torch

Fall 2008



Louisiana | Campus Compact

## Inside this issue:

- Service-Learning Spotlight: Our Lady of the Lake College
- Ready Campus program expansion
- Service-Learning development opportunities
- New LaCC partners

## Guests to Speak at Ready Campus Workshops

The Ready Campus Program was created to ensure safety on campuses in the case of a man-made or environmental disaster. Ready Campus seeks to educate those in positions of authority on a campus who can, in turn, educate students on the best way to respond in an emergency situation.

Louisiana Campus Compact will be holding a Ready Campus workshop on November 10<sup>th</sup>, in Lafayette, and repeated November 12<sup>th</sup>, in Shreveport. Guest speakers will include Dr. Phillip D. Schertzing and Dr. Helen J. Streubert.

Schertzing is Director of the Global Community Security Institute, a program that provides emergency preparedness training to public and private sector professionals. Schertzing is also an Academic Specialist/Instructor in the School of Criminal Justice at Michigan State University. Before his teaching career, Schertzing worked with the Michigan State Police for 25 years. He finished out his career in the State Police in the Emergency Management Division as their Assistant Commanding Officer.

Streubert was recently named Vice President for Academic Affairs at Our Lady of the Lake University in San Antonio. Previously she worked as Associate Vice President for Academic Affairs at Misericordia University, where Ready Campus was founded, in Dallas, Pennsylvania. Streubert has expertise in nursing, service-learning, strategic planning and budgeting, and student support. She is also an author of several books about nursing and nursing education.

Registration for this workshop is free of charge, and the registration form is available on our website, [www.selu.edu/lcc](http://www.selu.edu/lcc). Breakfast and lunch will also be provided for all workshop attendees.

## Save the Dates:

### Ready Campus Workshops

Lafayette .....11/10

Shreveport.....11/12

### CERT Trainings

Hammond ..... 11/19-20

LTC-Shreveport ..... 12/17-18



## Ready Campus Course Integration Grants Supplement Curricula across the State

In order to bring the Ready Campus initiative statewide and to ensure that it is sustainable over time, Louisiana Campus Compact has offered Ready Campus Course Integration Grants. These grants allow faculty applicants to develop emergency and disaster preparation and response curriculum modules and integrate them into their classes.

Faculty who receive a Ready Campus Course Integration Grant may adapt a Ready Campus course that has already been developed or may develop a new Ready Campus course. This year, LaCC has awarded grants to faculty at twelve colleges and universities who are integrating Ready Campus ideas in such disciplines as Criminal Justice, Disaster Science & Management, Kinesiology, Health & Human Performance, Business & Technology, Biology, Student Services/Counseling, Nursing, Freshman Orientation, Education, Chemistry & Physics, to Sports Administration.



**Greetings LaCC Members:**

**Here's to making it nearly through another hurricane season! Hurricane Gustav was a large storm that caused much destruction in some areas, but it also provided some students, faculty members, and staff members an opportunity to use skills supported by LaCC, such as emergency preparedness and disaster relief to aid in the recovery efforts. Below is an e-mail sent by Tawna Ponders, a nursing instructor at Baton Rouge Community College, showing the value of service-learning in the wake of a storm.**



## webmail

### Read Mail (Message 2 of 872)

**Date Sent:** Tuesday, September 23, 2008

**From:** Ponders, Tawna

**To:** Louisiana Campus Compact

**Subject:** Civic Engagement

**I thought I would share with you an implementation of community service into a course after Gustav.** I teach NURS 210, Adult Nursing I, a six-credit-hour course of which two credit-hours are lab. "Lab" in nursing often means "in-hospital clinical." When Gustav was threatening, half the students in 210 were scheduled to be on the floor for the first time in the rotation. The Friday before the Labor Day break, we as a group planned to meet at our assigned clinical site on the following Wednesday. We discussed the likelihood of being without power and phone service and that under no circumstance was anyone to risk safety to attend.

Gustav came on Labor Day. By Wednesday the emergent period for most hospitals had passed, and they were entering the recovery phase, which was, quite frankly, as bad as emergence. Most serious needs had been met, but **the hospitals were faced with exhausted staff or staff unable to get to work.** That's where we came in. I had already alerted the Baton Rouge General on Bluebonnet of the likelihood of having nursing student volunteers available. The hospital administration was more than pleased to give us the go-ahead.

Since BRCC was officially closed, the students were aware that they were not required to participate. To my surprise (I knew at least one of the students had evacuated to Mississippi), **all enrolled students showed up at 6:45 Thursday morning.** Dr. Cazes, the Chair of the Nursing Division, had cleared our work with Chancellor Dorsey. The General's staff was thrilled to have us. Staff repeatedly expressed pleasure at the effort the Baton Rouge Community College students had made to come. The students repeatedly said, "No one believes it that we're here." All the students showed up again on Friday morning. And again, we constantly heard, "BRCC's back!"

● ● ● ●  
***"No one  
 believes it  
 that we're  
 here."***

**I truly believe the appearance of our red-uniformed nursing students has made a lasting impression in the community.**

*Best, Tawna*

## Service-Learning Spotlight: Our Lady of the Lake

provided by Phyllis Leblanc

A gerontology course in the RN-BSN curriculum at Our Lady of the Lake College offers students a unique opportunity to join together theory and service. The students participate in a service-learning project at Charlie's Place, a state-of-the-art respite center located in Baton Rouge. Charlie's Place, opened by Alzheimer's Services of the Capital Area in the fall of 2007, is a program for individuals with mild to moderate Alzheimer's disease or dementia. The program offers families the opportunity to take a break from their daily caregiving responsibilities while their loved ones are in a safe environment.

The students enrolled in Nursing 4310, Gerontology, make several scheduled visits to Charlie's Place. In addition to performing routine tasks, the students assist with therapeutic and social activities such as arts and crafts, cooking, gardening, reminiscing, arm-chair exercises, music therapy, board/card games, and pet therapy. Some new activities have been planned for this fall, including choir bells and a tailgate party. The students will also assist the patrons of Charlie's Place to make Christmas ornaments for a display in the Hollydays market sponsored by the Junior League of Baton Rouge.

Reflective essay assignments promote critical thinking and writing skills. Typical reflection questions include the following:

- Describe your one-on-one interaction with a client. What were your thoughts, feelings, and frustrations during this time?

- What did you gain, if anything, from this volunteer day?
- What did you learn about the people that we served?
- What has surprised you – about Charlie's Place? about your classmates? about yourself?
- What values, opinions, decisions



Standing is student nurse Danielle Guidrey and sitting is Minnie Theford

- have you made or changed through this experience?
- What did you learn about your value to your community?

Below are a few examples of the students' reflection process:

Wendy: "Rudi, a 75 pound yellow lab/retriever, came into the courtyard and greeted everyone on an individual basis... I could see how much the participants enjoyed Rudi's antics, and they seemed to derive comfort from just watching him."

Blake: "Overall I would have to rate my experience for the first day a great one. I went in not knowing what to expect and came out with a better grasp on the disease and the tolls it takes on these clients. These people were special people before this disease, but somehow this disease makes them even more special in my eyes. Charlie's Place provides a wonderful service, and I would be interested in spending more time volunteering at such a facility."

Ryan: "Today, I was able to see just how much older people appreciate the company of younger people. I need to remind myself of this when caring for older patients at the hospital."

Taylor: "I met some very inspiring people today: the participants, their families, the staff, and volunteers. I know that Charlie's Place does not take away the devastating impact that Alzheimer's disease has on its victims and their caregivers.

But Alzheimer's Services provides such enormous support, I could not help but feel satisfaction and joy in knowing that such a wonderful program is available for Alzheimer victims and their families."

The service experience reinforces and offers new insight into topics presented in class such as ageism, age-related changes versus pathological changes, and health promotion of older adults. The service hours enable the students to develop competencies such as assessment, communication, collaboration, and teaching.





## Louisiana Campus Compact's office and several member offices are buzzing with new staff activity!



### LaCC Main Office

**Karen Powell** is the new Program Director. She comes to Louisiana Campus Compact after serving as the Assistant Director of the Communication across the Curriculum (CxC) program at Louisiana State University. At CxC, Powell helped establish and develop initiatives such as Communication-Intensive course certification, Communication Studios, and the Distinguished Communicator student certification.



**Karen Powell**

"This position offers me exciting new opportunities to contribute further to the prosperity of my beautiful and unique home state," Powell said. "I am eager to share my ideas and experiences with colleagues across the region, state, and nation and to learn from the work and models of those colleagues. My work at Louisiana Campus Compact will enable me to align even more directly my personal interests and values with my professional activities."

**Lynne Piacun**, former LaCC Graduate Assistant, has recently been promoted to the position of Ready Campus Coordinator. She assists Powell in helping set up CERT Trainings, processing Ready Campus grants, and speaking to colleges and universities interested in setting up Ready Campus teams. Piacun's degree in Graphic Design is an asset in her work on disaster preparedness materials, such as fliers and brochures, which are sent out to local colleges and universities to keep them informed on Ready Campus events and updates.

LaCC is pleased to have a new GA, **Zechariah Brewer**, as well as a student worker, **Roxanne Pfeil**, join the staff as well. Both are excited to be working on a team of such civic-minded individuals and hope that their contributions aid in achieving the mission of this program.

## CENTENARY



**Chris Lavan**

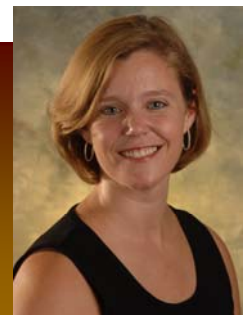
**Chris Lavan** has recently taken over as the new Director of Service-Learning at Centenary College. A Centenary alum, Lavan has returned to his alma mater in hopes of "making a difference in the way college is seen in the community as well as positively impacting the college's most important resource, its students."

After graduating from Centenary in 2006, Lavan went on to receive a Master's degree in Public Administration from LSU. During his time there, he served as a Graduate Assistant to Volunteer LSU and the LSU Community University Partnership, programs that work to support the community by creating partnerships and involvement opportunities.

## LOYOLA

Loyola now has a new full-time Director of Service-Learning, **Kelly Brotzman**. Brotzman comes to Loyola from Boston College, where she taught courses in the PULSE Program for Service-Learning and also served as the program's Assistant Director. That program combines the study of philosophy and theology with service to educate students about social injustice and encourage them to contemplate the answers to some of life's basic questions concerning themselves and the world.

At Loyola, Brotzman hopes to reach out to a greater variety of community partners and build more service-learning options into the common curriculum. She is working one-on-one with several faculty members to pilot several new service-learning courses across the curriculum this fall and resurrect existing ones. Loyola is also in the process of rebuilding and expanding their network of community partners.



**Kelly Brotzman**

## New to the Crew: Mississippi Campus Compact



Louisiana Campus Compact extends a warm welcome to the newest member of the National Campus Compact Coalition, Mississippi Campus Compact! Formerly operated under the title “Mississippi Center for Community and Civic Engagement,” MsCC will continue its previously-established efforts to promote service-learning and civic engagement within communities across that state.

**Welcome back, BRCC!**

**and**

**Welcome, Fletcher Technical  
Community College!**

### **Brown Foundation Celebration**

LaCC Executive Director Stuart Stewart and Program Director Karen Powell recently presented a poster describing and promoting Louisiana Campus Compact at the Brown Foundation celebration of Service-Learning in K-12 classrooms.

Founded by Joe W. and Dorothy Dorsett Brown, the Brown Foundation provides funding to organizations in Louisiana and Mississippi that concern themselves with community improvement. The Service-Learning program set up

by the Brown Foundation awards grants to applicants wishing to incorporate service-learning into their K-12 classrooms.

Both Stewart and Powell hope to see some of the innovative and dedicated teachers they met at the celebration attend the LaCC 2009 K-20 Service-Learning Institute.

## 2009 Gulf-South Summit on Service-Learning to be Hosted in Baton Rouge

2008/2009 Conferences	
<u>2008</u>	
Eighth International Conference on Service-Learning and Community Engagement.....	10/25-28
<u>2009</u>	
The 20th Annual Service-Learning Conference .....	3/18-21
Gulf-South Summit .....	3/25-27

For more information about these conferences, visit the LaCC website at [www.selu.edu/lcc](http://www.selu.edu/lcc).

The 2009 Gulf-South Summit on Service-Learning and Civic Engagement through Higher Education will be hosted in Baton Rouge on March 25-27, 2009.

Service-learning practitioners from throughout the southern region will present interactive workshops, poster sessions, and panel discussions at the conference, which will explore the theme of “Civic Engagement at the Crossroads: Rethinking Stakeholder Roles and Responsibilities.” The Summit will also feature plenary speakers who will discuss best practices of service-learning, as well as pre-Summit workshops presented by national leaders in service-learning.

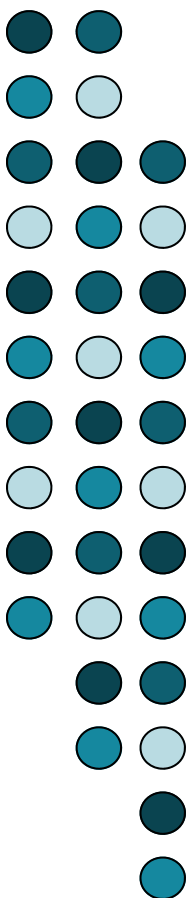
Summit participants will be offered the opportunity to join nationally-recognized LSU Biological Engineering Professor Marybeth Lima on March 28th for a Saturday Service Project constructing a playground for Baton Rouge children. For her innovative service-learning work, Lima received the 2007 Thomas Ehrlich Faculty Award for Service-Learning and the 2005 Ernest A. Lynton Award, the nation's two top service-learning faculty awards. She was a keynote speaker for the 2008 Gulf-South Summit.

The Gulf-South Summit also presents awards recognizing outstanding contributions to service-learning research, by a service-learning community partner, and by a full- or part-time undergraduate student.

Approximately 350 administrators, faculty members, staff, students, and community partners who are engaged in service-learning at colleges and universities throughout the Gulf South attended the 2008 Summit in Nashville.

Conference scholarships are available in the form of hotel accommodations and/or registration fees.

The 2009 Summit will be held at the Hilton Baton Rouge Capitol Center, 201 Lafayette St., in downtown Baton Rouge near the Old State Capitol. For more information, visit the Summit website or contact Jan Shoemaker, CCELL Director, at 225-578-9264 or [jshoema@lsu.edu](mailto:jshoema@lsu.edu).



### LACUSPA Conference 2008: “Student Safety: Priority One”



LACUSPA, the Louisiana Association of College and University Student Personnel Administrators, is an organization that strives to stimulate leadership and creativity, improve standards, and enhance the role of student personnel administrators. The work of its members impacts the lives of more than 200,000 students.

LACUSPA’s 2008 Annual Conference was held on September 22-24, 2008, at the Astor Crowne Plaza in New Orleans. The LaCC Directors shared information about the Ready Campus programs and networked with many campus safety personnel.

## LaCC and KyCC Train-the-Trainer Institute

In conjunction with LaCC, Kentucky Campus Compact held a Train-the-Trainer Institute on August 5-7, 2008, at Spalding University in Kentucky. This institute provided the LaCC Directors and four LaCC member Service-Learning faculty members/administrators the opportunity to meet twenty faculty members from across the state of Kentucky.

Institute sessions included discussions of how to build effective, sustainable relationships with service-learning community partners, how to prepare students for their service-learning experiences, and how to run an effective engagement office. The sessions were led by Dr. Meta Mendel-Reyes and Ashley Cochrane, Director and Associate Director of the Berea College Center for Excellence in Learning through Service (CELTS). Together the facilitators represented many years of experience in teaching, building student programs, and participating in community activism and engagement.

One attendee, Steve Gruesbeck, the Director of Service-Learning at Northwestern University, had this to say about his experience at the Institute:

“The August Service-Learning Train-the-Trainer Institute held in Louisville, Kentucky proved to be a terrific opportunity to collaborate with and learn from some of Kentucky and Louisiana's finest Service-Learning professionals. Dr. Meta Mendel-Reyes and Ashley Cochrane facilitated discussions and exercises and, as a result, revealed best-practices in service-learning relative to working with faculty, community, and students. I look forward to continuing these discussions with my new Kentucky and Louisiana colleagues and to collaborating on new projects in the very near future.”

The LaCC/KyCC Train-the-Trainer Institute is a fundamental component of a Learn & Serve grant that the two Compacts co-administer. LaCC Program Director Karen Powell commented that “because all the Institute participants already shared an interest in service-learning and brought a wealth of teaching experience with them, the discussions we shared were particularly fruitful.” She also noted that, “LaCC’s collaboration with Kentucky is fitting, since citizens in both states face similar issues such as poverty, healthcare challenges, and natural threats.” Undoubtedly LaCC and KyCC will continue to collaborate in their efforts to remedy such issues in their communities.

## Volunteer Summit

The 2008 Louisiana Volunteer Summit, which was sponsored by the Office of Public Health, convened representatives from agencies and non-profits across the state on August 13th in Baton Rouge.

LaCC Executive Director Stuart Stewart and Ready Campus Coordinator Lynne Piacun participated in a panel discussion on effective ways to address



potential emergencies and disasters, providing an update on the Louisiana Ready Campus initiatives, which are funded by the Louisiana Board of Regents. Piacun described the origin of Ready Campus, while Stewart spoke about what campuses can offer in times of crisis, upcoming certification programs, and grants available from Louisiana Campus Compact.

## **LaCC Staff Members Volunteer in Post-Gustav Recovery Efforts**

In the wake of Hurricane Gustav, volunteers of all skill levels were needed to assist various government, non-profit, and other aid organizations across the state. In response to that need, the staff of the Louisiana Campus Compact main office found places in need and jumped right into work. From working with the National Guard, to making meals for the elderly, to answering vital questions about recovery efforts, our staff members did their best to be useful in a time of crisis. Following is a more detailed breakdown of their contributions:

Stuart Stewart participated in statewide emergency response phone calls and served as a clearinghouse of disaster information for LaCC members. Stewart worked shifts at both the East Baton Rouge Parish and State of Louisiana Emergency Operation Centers and logged data at 211 regarding the assistance being requested statewide.

Karen Powell volunteered at the East Baton Rouge Parish Emergency Operations Center. She also logged data and answered calls at the United Way 211 call center, as Louisianans statewide sought information about open shelters, emergency food resources, tree removal services, counseling services, and other assistance.

Lynne Piacun assisted elderly residents in Hammond by preparing and delivering hot meals and finding other food for them. She also served as Stewart's liaison between the LaCC office in Hammond and statewide recovery efforts based out of Baton Rouge.

Zechariah Brewer's Air National Guard unit was activated on August 30th, 2008, and he was deployed to Southeast Louisiana. After the storm hit, Brewer and his unit, along with National Guard units from Kentucky, California, Tennessee and Florida, set up a deployable cell tower and satellite network and began delivering phone and internet services through laptops, internet, and cell phones they provided.

Roxanne Pfeil volunteered at the Greyhound station in New Orleans on the Sunday after Gustav hit. She assisted returning evacuees unload and locate their luggage from one bus and then bring it to the bus that would take them back home. She also took photographs for the City of New Orleans while there.

### **It's Never Too Late to Get Prepared!**

As students, faculty, and staff begin another school year, you prepare academically for the new responsibilities that will surely arise. Additionally, it is vitally important to become prepared for a spectrum of emergency situations that may develop without much notice. The U.S. Department of Homeland Security's Ready Campaign website suggests that everyone should do four things:

1. Get a Kit
2. Make a Plan
3. Get Informed, and
4. Get Involved

Now is an optimal time to raise awareness, on campus, at home, at work, and in your community, to ensure that everyone has all the tools needed to deal with an emergency. One very effective way to get involved is to attend a Community Emergency Response Team (CERT) Training session! These sessions provide valuable information about and hands-on instruction in dealing with the after-effects of a disaster. For more information on upcoming sessions, check out the "Save the Dates" box on page 1 and the LaCC website ([www.selu.edu/lcc](http://www.selu.edu/lcc)).

